

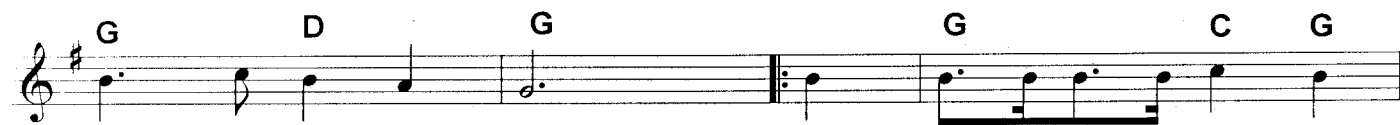
We shall not be moved

amerikanisches Gewerkschaftslied nach einer Baptistenhymne



Erster Teil der Stropheinstrumental

alle: Just like a tree that's stand - ing by the wa - ter,



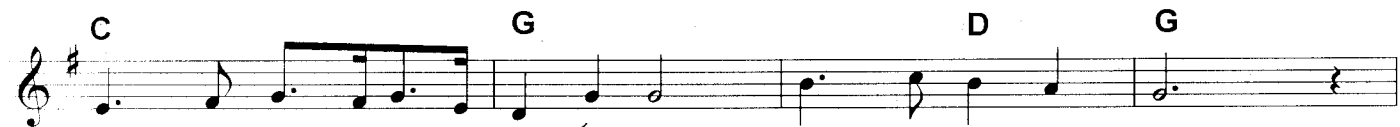
we shall not be moved.

Vorsänger: The un - ion is be - hind uns,
We'll stand an fight to - ge - ther,
We're black an white to - ge - ther,



alle: we shall not be moved, the un - ion is be - hind us, **alle:** we shall not be moved, just like a

Vorsänger: we'll stand an fight to - ge - ther,
we're black and white to - ge - ther,



tree that's stand - ing be the wa - ter, we shall not be moved.



We shall not be, we shall not be moved, we shall not be, we shall not be moved, just like a



tree that's stand - ing by the wa - ter, we shall not be moved.